

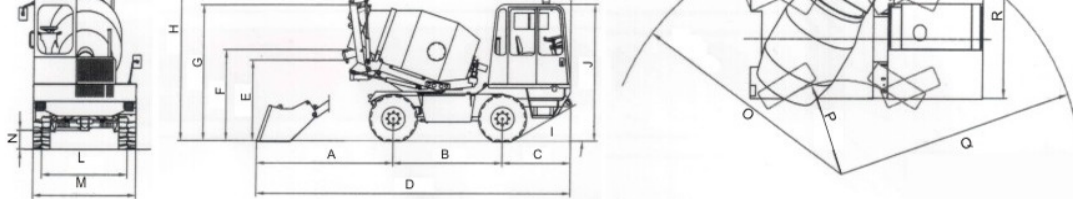
For Truly Technical Constructions...!

Self Loading Transit Mixer - (MST)
Available Capacity 1/1.2/2/2.5/3.5/4 m³



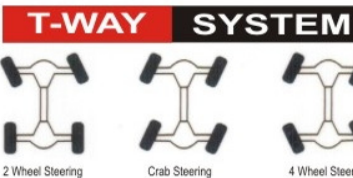
Manufactured under license from
"DUMEC S.R.L"

 **MACONS**TM



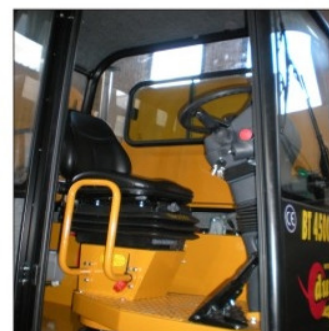
Dimensions:

MODEL	A	B	C	D	E	F	G	H	I	J	K	L	M	N	O	P	Q	R
MST-2	2820	2250	1430	6500	1600	1870	2800	4200	30°	2830	5000	1770	2130	330	R-4250	R-1680	R-4300	2880
MST-4	2710	2700	1400	6810	1900	2250	3140	4300	32°	2940	5460	1970	2360	355	R-5100	R-2000	R-5000	3300



Technical Specifications

DESCRIPTION	2 M ³	4 M ³
Engine	Direct injection natural aspirated Water Cooled four Stroke turbo charged diesel engine 60 HP at 2300 rpm	Direct injection natural aspirated Water Cooled four Stroke turbo charged diesel engine 110 HP at 2500 rpm
Traction	4 Wheel Drive 4 Wheel Steering	4 Wheel Drive 4 Wheel Steering
Transmission	Hydrostatics 4 Speeds	Hydrostatics 4 Speeds
Steering	Power Assisted	Power Assisted
Differentials	Totally enclosed oil-bath disc brakes	Totally enclosed oil bath disc brakes
Parking Brake	Mechanic	Mechanic
Starting	Electric 12 V	Electric 12 V
Effective Yield	2000 Lit.	4000 Lit.
Loading	Self Loading Shovel Capacity 600 Lit.	Self Loading Shovel Capacity 600 Lit.
Discharge Concrete	Rapid discharge of the Concrete by hydraulic drum tilting	Rapid discharge of the Concrete by hydraulic drum tilting
Adjustment Of Drum Rotation	By Electronic Control	By Electronic Control
Water Equipment	Self Priming hydraulic pump 220 Lt./min.	Self Priming hydraulic pump 220 Lt./min.
Water Tank	600 Lit.	900 Lit.
Drive Seat	Rotating 180 protection cabin	Rotating 180 protection cabin
Tyres	Front & Rear type 12/75 18, 12 PR	Front & Rear type 405/70-20 14 PR, Rim Size 13" x 20.1"
Lights Equipment	Complete with head / tail lights, rotating light and emergency lights.	Complete with head / tail lights, rotating light and emergency lights.
Empty Weight	5050 Kg.	7600 Kg.
Leaning Grade	35 %	35 %



Salient Features

- Operation is user – friendly.
- Excellent quality of materials and components gives long life with less economy.
- The design of devices allow concrete consistently with high speed.
- 4 wheel drive & 4 wheel steering.
- 180° reversible driving post.
- Electronic weigh batching unit.
- 35% Gradeability.
- Efficient and reliable after sale – service, round the clock.

Optional:

- Extra Chute.
- High Pressure Washing System.
- Printer.
- Slewing Drum Arrangement.

Design and Specification are subject to change without prior notice.

MACONS EQUIPMENTS PVT. LTD.

Regd. Office:- Plot No. 37/C, Phase-I, G.I.D.C. Estate, Vatva, Ahmedabad-382 445, Gujarat, INDIA.
Ph.: 0091 + 79 + 2589 4558 / 2589 1510 / 6543 8746

Fax: 0091 + 79 + 2589 2097, E-mail: info@macons.co.in, Web: www.macons.co.in

Works:- Survey Block No. 212 / 216, Mahalaxmi Estate, Matoda Patia, Nr. Claris, Vill:- Vasna Chacharwadi, Ta.- Sanand, Ahmedabad - 382 220