

# Robex 210LC-7 Long Reach Excavator

|   |  |
|---|--|
| CUMMINS B5.9-C Engine (Tier-II) 150 HP (112 kW) / 1,950 rpm |  |
| Operating Weight  | 24,500 kg (54,000 lb)                                    |
| Bucket Capacities, SAE                                      | 0.22 ~ 0.52m <sup>3</sup> (0.29 ~ 0.68 yd <sup>3</sup> ) |
| Maximum Reach on ground level                               | 15,120 mm (49' 7")                                       |
| Digging depth   | 11,760 mm (38' 7")                                       |
| Travel Speed  | 3.4 to 5.3 km / hr (2.1 to 3.3 mph)                      |

**L**ong Reach Front Includes : Boom, Arm, Linkage, Bucket, Cylinders (boom, arm, and bucket)Hydraulic lines, and Additional conuterweight for stability.

**D**esigned especially for river maintenance work, the long-range front attachments give all the advantages of a hydraulic excavator plus an exceptional long reach ranging from 15m(50ft).

### Relief valve setting

|               |                                     |
|---------------|-------------------------------------|
| Boom          | 330 kgf/cm <sup>2</sup> (4,690 psi) |
| Arm           | 300 kgf/cm <sup>2</sup> (4,270 psi) |
| Bucket        | 280 kgf/cm <sup>2</sup> (3,980 psi) |
| Travel        | 330 kgf/cm <sup>2</sup> (4,690 psi) |
| Swing circuit | 240 kgf/cm <sup>2</sup> (3,410 psi) |
| Pilot circuit | 35 kgf/cm <sup>2</sup> ( 500 psi)   |
| Service valve | Installed                           |

### Hydraulic cylinders

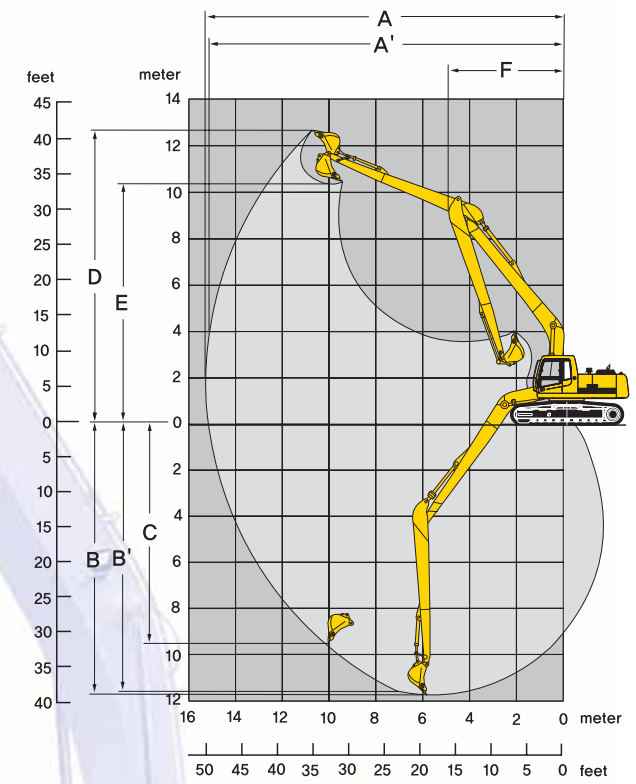
|                                       |  |
|---------------------------------------|--|
| No. of cylinder - bore × rod × stroke |  |
| Boom                                  | 2 - 120 × 85 × 1,290mm (4.7" × 3.3" × 50.8") |
| Arm                                   | 1 - 140 × 95 × 1,460mm (5.5" × 3.7" × 57.5") |
| Bucket                                | 1 - 100 × 70 × 870mm (3.9" × 2.8" × 34.3")   |

### Digging force

|                      |                                      |
|----------------------|--------------------------------------|
| Bucket digging force | (SAE)7,340 kgf [71.9kN] (16,180 lbf) |
|                      | (ISO)8,510 kgf [83.5kN] (18,760 lbf) |
| Arm crowd force      | (SAE)4,990 kgf [48.9kN] (11,000 lbf) |
|                      | (ISO)5,070 kgf [49.7kN] (11,180 lbf) |

### Working ranges

|                                     |                    |
|-------------------------------------|--------------------|
| Boom length                         | 8,200 mm (26' 11") |
| Arm length                          | 6,300 mm (20' 8")  |
| A Max. digging reach                | 15,220 mm (50' 0") |
| A' Max. digging reach on ground     | 15,120 mm (49' 7") |
| B Max. digging depth                | 11,760 mm (38' 7") |
| C Max. digging depth (8' level)     | 11,650 mm (38' 3") |
| C' Max. vertical wall digging depth | 9,610 mm (31' 6")  |
| D Max. digging height               | 12,550 mm (41' 2") |
| E Max. dumping height               | 10,280 mm (33' 8") |
| F Min. swing radius                 | 4,870 mm (16' 0")  |



### Operating weight (approximate)

Operating weight, including 8200 mm (26' 11") Boom, 6300 mm (20' 8") Arm, SAE heaped 0.52m<sup>3</sup> (0.68 yd<sup>3</sup>) backhoe bucket, and 800 mm (32") triple grouser shoe, additional counterweight lubricant, coolant, and full fuel tank, hyd tank and the standard equipment.

|                        |                                      |
|------------------------|--------------------------------------|
| Major component weight |                                      |
| Upperstructure         | 5,850 kg (12,900 lb)                 |
| Counterweight          | 5,300 kg (11,680 lb)                 |
| Attachment             | 4,250 kg ( 9,370 lb)                 |
| Operating weight       | 24,500 kg (54,000 lb)                |
| Drawbar pull           | 21,100 kgf (46,518 lb)               |
| Ground pressure        | 0.39 kgf/cm <sup>2</sup> ( 5.55 psi) |

### Shipping Dimensions

|                                     |                    |
|-------------------------------------|--------------------|
| A Tumbler distance                  | 3,650 mm (12' 0")  |
| B Overall length of crawler         | 4,440 mm (14' 7")  |
| C Ground clearance of counterweight | 1,060 mm ( 3' 6")  |
| D Tail swing radius                 | 2,830 mm ( 9' 3")  |
| D' Rear-end length                  | 2,770 mm ( 9' 1")  |
| I Overall length                    | 12,030 mm (39' 6") |
| J Overall height of boom            | 3,280 mm (10' 9")  |

### Base Machine

|                                   |                       |
|-----------------------------------|-----------------------|
| E Overall width of upperstructure | 2,700 mm ( 8' 10")    |
| F Overall height of cab           | 2,920 mm ( 9' 7")     |
| G Min. ground clearance           | 480 mm ( 1' 7")       |
| H Track gauge                     | 2,390 mm ( 7' 10")    |
| K Track shoe width                | 800 mm (31.5")        |
| L Overall width                   | 3,190 mm (10' 6")     |
| N Overall length                  | 4,990 mm (16' 4")     |
| Weight                            | 20,110 kg (44,330 lb) |

### Long Reach Boom

|                  |                     |
|------------------|---------------------|
| L Overall length | 8,395 mm (27' 7")   |
| H Overall height | 1,515 mm ( 5' 0")   |
| W Overall width  | 800 mm ( 2' 7")     |
| Weight           | 2,470 kg (5,450 lb) |

### Long Reach Arm

|                  |                     |
|------------------|---------------------|
| L Overall length | 7,280 mm (23' 11")  |
| H Overall height | 835 mm ( 2' 9")     |
| W Overall width  | 480 mm ( 1' 7")     |
| Weight           | 1,340 kg (2,950 lb) |

### Bucket

|                  |                   |
|------------------|-------------------|
| L Overall length | 1,400 mm ( 4' 7") |
| H Overall height | 820 mm ( 2' 8")   |
| W Overall width  | 1,035 mm ( 3' 5") |
| Weight           | 440 kg (970 lb)   |

### Lifting capacities

Boom : 8.2 m (26' 11") Bucket : 0.52m<sup>3</sup> SAE heaped  
 Arm : 6.3 m (20' 8") Shoe : 800 mm (32") triple grouser shoe with 5,300kg (11,680 lb) CWLT  
 Rating over - front  
 Rating over - side or 360 degree

| Load point height m (ft) | Load radius     |    |                 |    |                 |    |                  |    | At max. reach |       |
|--------------------------|-----------------|----|-----------------|----|-----------------|----|------------------|----|---------------|-------|
|                          | 3.0 m (10.0 ft) |    | 6.0 m (20.0 ft) |    | 9.0 m (30.0 ft) |    | 12.0 m (40.0 ft) |    | Capacity      | Reach |
| 9.0 m (30.0 ft)          | kg              | kg | kg              | kg | kg              | kg | kg               | kg | kg            | m(ft) |
|                          | lb              | lb | lb              | lb | lb              | lb | lb               | lb | lb            |       |
| 6.0 m (20.0 ft)          | kg              | kg | kg              | kg | kg              | kg | kg               | kg | kg            |       |
|                          | lb              | lb | lb              | lb | lb              | lb | lb               | lb | lb            |       |
| 3.0 m (10.0 ft)          | kg              | kg | kg              | kg | kg              | kg | kg               | kg | kg            |       |
|                          | lb              | lb | lb              | lb | lb              | lb | lb               | lb | lb            |       |
| Ground Line (-10.0 ft)   | kg              | kg | kg              | kg | kg              | kg | kg               | kg | kg            |       |
|                          | lb              | lb | lb              | lb | lb              | lb | lb               | lb | lb            |       |
| -3.0 m (-10.0 ft)        | kg              | kg | kg              | kg | kg              | kg | kg               | kg | kg            |       |
|                          | lb              | lb | lb              | lb | lb              | lb | lb               | lb | lb            |       |
| -6.0 m (-20.0 ft)        | kg              | kg | kg              | kg | kg              | kg | kg               | kg | kg            |       |
|                          | lb              | lb | lb              | lb | lb              | lb | lb               | lb | lb            |       |
| -9.0 m (-30.0 ft)        | kg              | kg | kg              | kg | kg              | kg | kg               | kg | kg            |       |
|                          | lb              | lb | lb              | lb | lb              | lb | lb               | lb | lb            |       |

NOTE 1. Lifting capacity are based on SAE J1097, ISO 10567  
 2. Lifting capacity of the Robex Series does not exceed 75% of tipping load with the machine on firm, level ground or 87% of full hydraulic capacity.  
 3. The load point is a hook (standard equipment) located on the back of the bucket. 4. ( \* ) indicates load limited by hydraulic capacity.



**HYUNDAI**  
HEAVY INDUSTRIES CO., LTD.  
CONSTRUCTION EQUIPMENT DIVISION

Head Office (Sales Office) U.S. Operation European Operation

1 CHEONHA-DONG, DONG-KU, ULSAN, KOREA  
 Tel : (82) (52) 230-7970, 7729 Fax : (82) (52) 230-7979, 7720  
 Hyundai Construction Equipment U.S.A., Inc.  
 955 ESTES AVENUE, ELK GROVE VILLAGE IL, 60007  
 Tel : (1) 847-437-3333 Fax : (1) 847-437-3574  
 Hyundai Heavy Industries Europe N.V.  
 VOSSENDAAL 11, 2440 GEEL, BELGIUM  
 Tel : (32) 14-562200 Fax : (32) 14-593405 - 06

PLEASE CONTACT

www.hyundai-ce.com

2006.02. rev3